



Vietnam

ALL THE RIGHT MOVES

Importing Goods to Vietnam



Importing Personal Effects

All shipments of used household and personal effects are subject to a 100% inspection by customs and are dutiable at a rate determined by the Ministry of Finance. The shipper must be in possession of the appropriate visa and work permit. Only one of each electrical item is allowed. Books, CDs, tapes and discs are subject to censorship.

Your local Britannia Member will provide you with detailed customs regulations. Britannia and our agents will assist you with completion of customs formalities. To assist us with this please let us have a copy of your passport (and visa if applicable). The required documentation will be supplied to you on arrival.

If you're importing your belongings by shared load (groupage), all consignments will be bar coded before they are loaded into the shipping container. This will ensure that no items are left at origin and will allow Britannia to check the status of your goods in transit.

Prohibitions and Restrictions

The following items are prohibited or restricted and we strongly advise you not to include them in your consignment:

- Firearms, ammunition & weapons
- Inflammable goods & substances
- Plants, plant material & animal products
- Foodstuffs, perishables or otherwise
- Alcohol, tobacco & narcotics
- Dangerous goods
- Objectionable, indecent and offensive material

Documentation

Britannia will assist you to complete the customs formalities. To help us with this we will need a copy of your passport (and visa if applicable).

Our team members will supply the required documentation to you on arrival. To avoid additional charges, it is essential that documentation is completed and returned promptly.

Transit Times

Both sole use and crated consignments usually take an average of 5 – 6 weeks to reach Vietnam from the UK. Sole use container loads take on average 5 – 6 weeks door to door. Clearance times for sea shipments are approximately one week. However, this can vary depending on volumes being shipped, customs or immigration delays and prevailing weather conditions.

** Any transit times provided should be considered only as a guide and cannot be guaranteed. Shipping can be subject to delays which are beyond our control.*



0845 600 6661

www.britannia-movers.co.uk



Welcome to Britannia in Vietnam

Britannia in Vietnam

Britannia can offer you a door-to-door service to Vietnam and can either ship your effects by sole use container, or for smaller shipments in a wooden crate (LCL). In addition, we can offer a door-to-door airfreight service to some destinations in Vietnam. Our agents in Vietnam will arrange customs clearance, and deliver and unpack the effects, including removal of debris on day of delivery.

Storage

Should you require storage prior to delivery this can be arranged. You should expect to pay a one-off storage handling fee plus a monthly storage charge. Please note that these charges are payable locally.

It is vitally important that you ensure that your marine insurance policy is extended for the period of the storage.

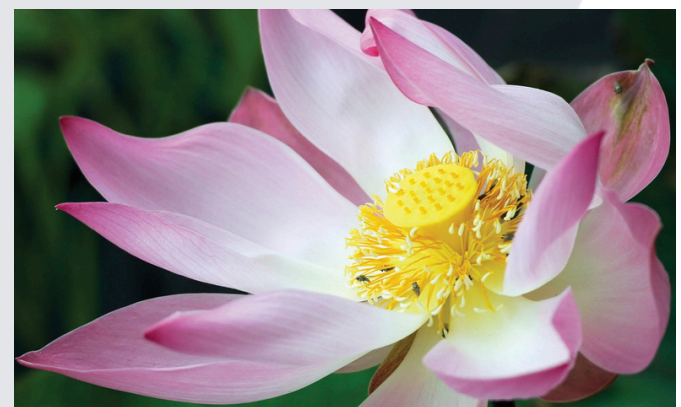


Motor Vehicles

No used cars may be imported, only brand-new ones with less than 100km. Current duty on a new car is 250%, therefore we do not recommend the importation of your car to Vietnam.

Additional Services

Britannia can provide a range of additional moving services when moving to Vietnam. We are authorised to provide comprehensive insurance, arrange international storage, help you with relocating your family pets, and can also recommend a convenient way to transfer your money. For further information about Britannia's partner companies please scan this QR code.



Your Moving Guide Checklist

Three Months Before

- Arrange for a pre-move survey with Britannia
- Have a clear idea what you would like to take with you
- Arrange for a quote for the transportation of your family pet

Six Weeks Before

- Book move date and agree moving plan
- Make a list of any items to be moved which will need particular care
- Book pet transport carrier and confirm logistics
- Advise of new school addresses so that education records can be passed on quickly
- Doctor – de-register. If undergoing hospital treatment, notify a new doctor as soon as possible

Four Weeks Before

- Advise schools/nurseries of movement and obtain records
- Cancel memberships including gym, library etc
- Arrange financial affairs: foreign exchange, pension transfers and bank accounts

Three Weeks Before

- Confirm childcare arrangements for moving day
- Plan the best way to look after pets on moving day and confirm itinerary for transportation
- Clear out unwanted belongings
- Start using up food from the freezer

Two Weeks Before

- Contact service providers to arrange final accounts and meter readings
- Telecoms/digital/cable TV provider
- Electricity supplier
- Gas/Oil supplier
- Water Rates
- Local Council Taxes
- Credit card/store card or credit card protection companies
- TV Licence
- Notify all hire purchase/lease/standing orders or loans companies

Notify plans of movement:

- Dentist
- Optician
- Amend insurance cover on buildings, household contents, motor, life etc
- National Insurance
- Child Benefit
- Motor vehicle registration
- Driving Licence (DVLA)
- Pension company
- Redirection of mail via the Post Office (visit your local Post Office for details)
- Send out change of address cards to friends, relatives, clubs, and organisations
- Organise the disconnection and reconnection of domestic appliances: washing machine, cooker, dishwasher

Two Days Before

- Defrost the fridge and freezer
- Cancel any regular deliveries (milk / newspapers)

The Day Before

- Check drawers and trunks/chests for any fragile items
- Take down curtains and blinds
- Put together a pile of 'do not remove' essentials: passports, tickets, itineraries, coats, handbags, snacks, cleaning materials
- Pack small valuables separately and leave with essentials pile e.g. jewellery, watches, money, bonds, coins, stamps etc
- Separate your airfreight consignment from your sea freight if applicable

The Big Day

- Confirm service meter readings and keep a spare copy of readings
- Switch off power and water supplies (if necessary)
- Lock all windows and doors
- Drop keys off with estate agent
- Confirm you have provided all required documentation for your sea freight/airfreight consignment

